



STUDENT INFO PACK
BACK TO CAMPUS
OCTOBER 2021

STUDENT INFO PACK CONTENT

	Page
➤ Message from the Vice Chancellor	03
➤ <i>Travelling & Onboarding - Students Residing in Malaysia</i>	04
➤ <i>Travelling & Onboarding - Students Travelling from Abroad</i>	06
➤ Campus Life in the New Normal	11
➤ Campus Map	17
➤ Important Contacts and Web Links	17
➤ Campus Facilities Operational Hours	17

Disclaimer: The details in this student info pack is accurate as to the date it was published (8th October 2021). Changes may occur in the effective dates of return based on the latest directives from the Ministry. However, the processes will remain. Therefore, please liaise closely with your mentor/programme counsellor/recruiter for any latest updates from the Management.

VICE-CHANCELLOR'S MESSAGE

Greetings MAHSA students.

I hope you are safe and in the best of health.

We have received our latest directives from the Ministry of Higher Education Malaysia and I am pleased to inform that students who have received both doses of the COVID-19 vaccination (and completed 14-days after second dose) will be allowed to return to campus for their face-to-face lessons from 18th October 2021 onwards. This return however will take place in stages as stated below:

Stage 1: 18 Oct & 25 Oct 2021 - Final year students

Stage 2: 1 Nov 2021 - Students sitting for professional exams or final year exams

Stage 3: 8 Nov 2021 - Student pending practical sessions

Stage 4: 15 Nov 2021 - Students who need to use the laboratory for research purpose

Stage 5: 22 Nov 2021 - Others

Please communicate with your Programme Coordinators and upon arrival to campus, you are required to go to your faculty for the re-registration process, and thereafter to MAHSA Residence if you are a resident.

Hybrid mode for teaching and learning will continue so as to accommodate those who are waiting to receive their vaccinations and return to campus for face-to-face lessons. The management urges those who haven't registered via their MySejahtera to do so as soon as possible, or to walk-in into the nearest vaccination centre from their homes to have this completed.

Please note that once you have returned to campus, daily checking on your MySejahtera will be done to maintain a safe environment for everyone. Status of entry is shown in page 5 of this communication pack. Day scholars are requested to refer to their MySejahtera risk assessment prior to arriving at campus so as not to be sent back due to reasons as stated in page 5.

This student info pack is a comprehensive guide to assist you in understanding what needs to be done with regards to your travel arrangements, quarantine/isolation procedures, covid testing, health assessments, registration, safety, and protocols while being on campus.

Please note also that MAHSA has already put into place much efforts and initiatives to keep our campus safe since the start of this pandemic. Our measures have only enhanced since to further keep our campus safe for all. We have an on-campus clinic by MAHSA Poliklinik, on-call doctors, isolation rooms, in-house sanitisation services, elevator sanitisation lamps, temperature check-points, hand sanitiser supplies, physical distancing protocols, and more. In addition to all this, since we assisted in the National Vaccination Programme, I am glad to inform you that our academic and non academic staff have all been vaccinated as well.

I look forward to your arrival at MAHSA University and wish you a safe journey back to campus.

Prof. Dato' Dr. Ikram Shah Bin Ismail

TRAVEL & ONBOARDING: STUDENTS RESIDING IN MALAYSIA



**ONLY FULLY VACCINATED
STUDENTS ARE ALLOWED TO
RETURN TO CAMPUS**
(with a completion of 14 days after 2nd dose)

RETURN DATES BY STAGES

- **Stage 1: Final year students**
18 Oct to 31 Oct 2021
- **Stage 2: Students sitting for professional exams or final year exams**
1 Nov to 7 Nov 2021
- **Stage 3: Student pending practical sessions**
8 Nov to 15 Nov 2021
- **Stage 4: Students who need to use the laboratory for research purpose**
15 Nov to 21 Nov 2021
- **Stage 5: Others**
22 Nov 2021

REREGISTRATION & REPORTING TO CLASS

All reregistration for senior students will take place at their respective faculties.
Please contact your programme coordinator for more details.

If you require a travel letter, please contact Student Central at +6011-12277425
(24hr Hotline).

STUDENTS RESIDING IN MAHSA RESIDENCE

- **OUTPASS**
Students are allowed to exit the Residence with a valid outpass which can be applied online via <http://110.4.40.157/residence/studentIndex.php>
Cut off time for returning to campus will be 9PM.
- **E-HAILING SERVICES**
Residents may pick up items from Drop-off zone at the Residence.

ENTRY PERMISSION STATUS

Please refer to your MySejahtera risk status before arriving to campus. Permission for entry into the campus grounds will be based on the following risks status.



Permitted on Campus



NOT Permitted on Campus



TRAVEL & ONBOARDING: STUDENTS TRAVELLING FROM ABROAD

ENTRY PROCEDURES FOR INTERNATIONAL STUDENTS GOING BACK TO CAMPUS

MOVEMENT PROCEDURES



INTERNATIONAL STUDENTS ALLOWED TO ENTER MALAYSIA

JPT DEPARTMENT
OF HIGHER
EDUCATION



Education
MALAYSIA

These are the categories of **international students who are fully vaccinated** and are allowed entry into Malaysia:

- All existing and new international students except those who come from countries listed in the banned list (if any);
- International students who are citizens of the United Kingdom (UK); and
- International students participating in mobility and Edutourism programmes.

All **legitimate dependents of international students** are **allowed** entry into Malaysia **except** those who come from countries listed in the banned list (if any).

All international students and legitimate dependents will have to apply for permission to enter Malaysia via Education Malaysia Global Services (EMGS), subject to the approval of the Director General of Immigration Department Malaysia (DGIM).

MOVEMENT PROCEDURES

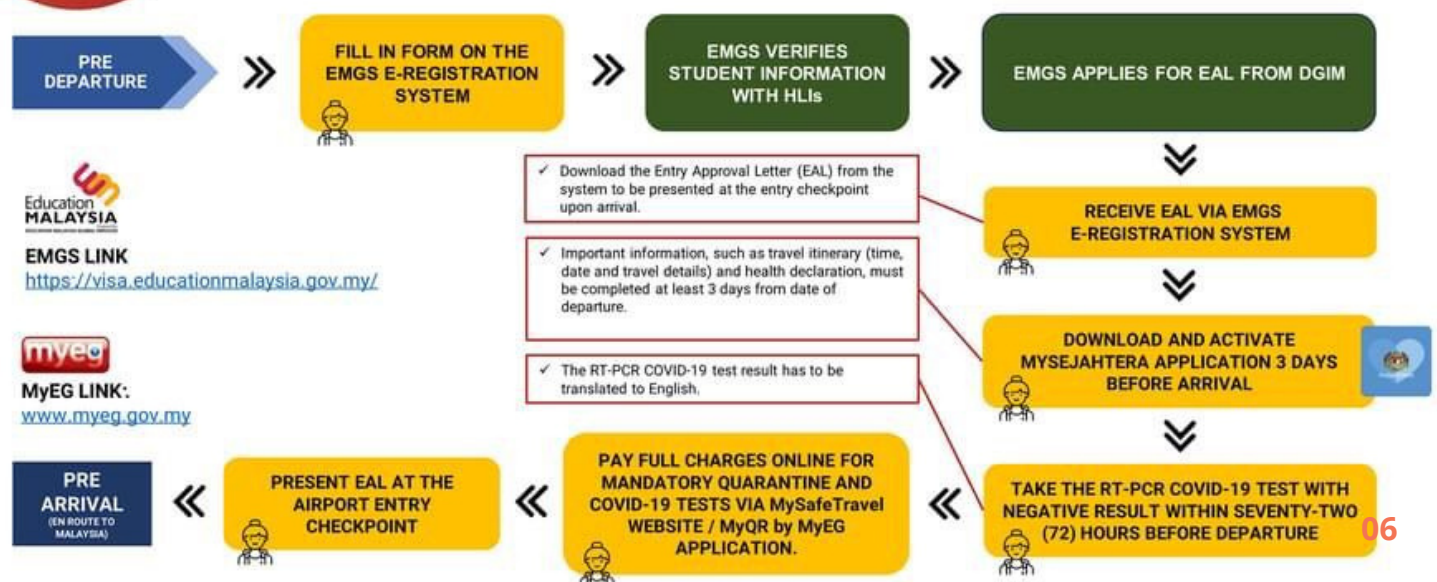


FLOWCHART FOR ENTERING MALAYSIA (PRE-DEPARTURE TO PRE-ARRIVAL)

JPT DEPARTMENT
OF HIGHER
EDUCATION



Education
MALAYSIA



MOVEMENT PROCEDURES

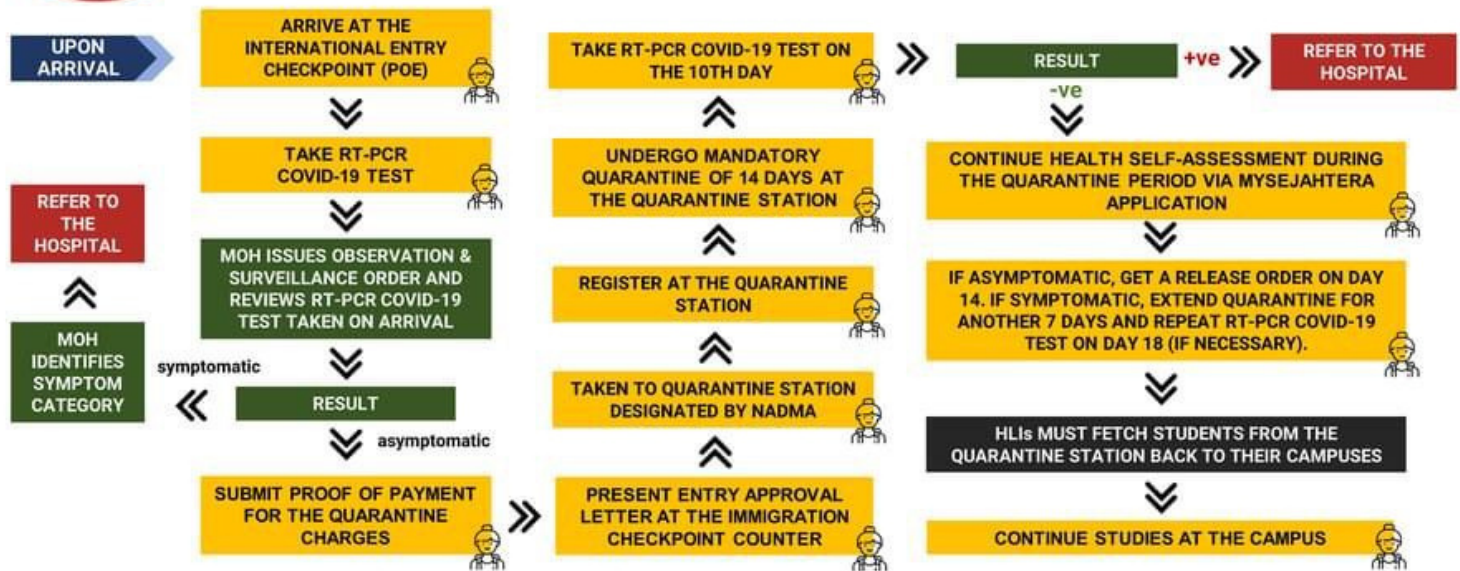
FOR INTERNATIONAL STUDENTS

FLOWCHART FOR ENTERING MALAYSIA (UPON ARRIVAL TO POST-ARRIVAL)

JPT DEPARTMENT OF HIGHER EDUCATION



Education MALAYSIA



MOVEMENT PROCEDURES

FOR INTERNATIONAL STUDENTS

HOME / RESIDENCE QUARANTINE UNDER HOME SURVEILLANCE ORDER

JPT DEPARTMENT OF HIGHER EDUCATION



Education MALAYSIA

International students who are fully vaccinated with complete dose(s) of COVID-19 vaccination and wish to apply for Home/Residence Quarantine under the Home Surveillance Order (HSO) can submit their application to the Ministry of Health. Visit moh.gov.my/HQA portal to apply and the application must be made 7 - 10 days prior to date of entry into Malaysia.

However, those who enter Malaysia via Johor must apply seven (7) days in advance for home quarantine. The application can be made directly to the Johor State Department via email at cprcknj@moh.gov.my.

Transits to any domestic destinations within a grace period of 24 hours are allowed for international students whose HSO applications are approved.

MOVEMENT PROCEDURES



DEFINITIONS OF COVID-19 VACCINATION STATUS

JPT DEPARTMENT OF HIGHER EDUCATION



Education MALAYSIA

Fully vaccinated individuals refer to those who have received all dose(s) of any COVID-19 vaccines (that are registered in Malaysia) and have completed the waiting period according to the specifications detailed in the table below:

Vaccine Type	Comirnaty released by Pfizer- BioNTech	AstraZeneca released by Oxford	Coronavac released by Sinovac	Gam-COVID-Vac (Sputnik V) released by Gamaleya	CanSinoBIO
<i>Number of doses for getting the complete vaccine by vaccine type</i>	2 doses with time interval of 21 days between both doses	2 doses with time interval of 4 to 21 days between both doses	2 doses with time interval of 28 days between both doses	2 doses with time interval of 21 days between both doses	Single dose
<i>Waiting Period</i>	14 days after receiving the second doses				28 days after receiving the dose

MOVEMENT PROCEDURES



FEEES FOR MANDATORY QUARANTINE AND RT-PCR COVID-19 TESTS

JPT DEPARTMENT OF HIGHER EDUCATION



Education MALAYSIA

14 DAYS

ITEM	FEE
Operational Fixed Charges	RM 2,600.00
Accommodation (RM 150.00/per night)	RM 2,100.00
RT-PCR Test (RM 250.00/per test)	RM 500.00
TOTAL	RM 5,200

- ✓ Students need to undergo a mandatory quarantine at a designated Quarantine Station for 14 days.

21 DAYS

ITEM	FEE
Operational Fixed Charges	RM 2,600.00
Accommodation (RM 150.00/per night)	RM 3,150.00
RT-PCR Test (RM 250.00/per test)	RM 500.00
TOTAL	RM 6,250

- ✓ Students need to undergo a mandatory quarantine at a designated Quarantine Station for 21 days.
- ✓ The RT-PCR COVID-19 Test will be done on the 18th day, if necessary.

MOVEMENT PROCEDURES

FOR INTERNATIONAL STUDENTS

RESPONSIBILITIES OF HIGHER LEARNING INSTITUTIONS (HLIs)

JPT DEPARTMENT OF HIGHER EDUCATION



Education MALAYSIA

Identify their students' personal and travel information to plan for a safe and smooth entry into Malaysia and back-to-campus journey.

Arrange and manage the logistics associated with fetching their students from the quarantine stations and sending them back to campus after they complete their mandatory quarantine.



Verify their students' information before EMGS forwards the application to IMI for approval.

Inform students of the latest back-to-campus SOP based on the dynamic orders, rules and guidelines that are updated by the Government from time to time and ensure students' adherence to the SOP.

MOVEMENT PROCEDURES

FOR INTERNATIONAL STUDENTS

RESPONSIBILITIES OF INTERNATIONAL STUDENTS

JPT DEPARTMENT OF HIGHER EDUCATION



Education MALAYSIA

Pre Arrival

Obtain EAL from the DGIM

Download and complete personal details on the MySejahtera application.

Pay full charges online for mandatory quarantine and COVID-19 tests via MySafeTravel website/ MyQR by MyEG application.

Take an RT-PCR COVID-19 test with negative result within seventy-two (72) hours before flying to Malaysia.

Upon Arrival

Do a health screening and take an RT-PCR COVID-19 test.

Post Arrival

Register at the Quarantine Station.

Be fully responsible for own luggage and belongings.

Do a daily health self-assessment during the quarantine period via MySejahtera application.

PROCEDURES FOR INTERSTATE TRAVELS

MOVEMENT PROCEDURES



FLOWCHART FOR INTERSTATE TRAVELS

JPT DEPARTMENT OF HIGHER EDUCATION



Education MALAYSIA



MOVEMENT PROCEDURES



RESPONSIBILITIES OF HIGHER LEARNING INSTITUTIONS (HLIs)

JPT DEPARTMENT OF HIGHER EDUCATION



Education MALAYSIA



01

Inform students of the latest SOPs for interstate travels based on the orders, rules and guidelines as updated by the Government from time to time and ensure students' adherence to the SOP.



02

Help students as and when required throughout the process.

CAMPUS LIFE IN THE NEW NORMAL

The first stage of MCO was enforced in March 2020. Since the reopening of our campus thereafter in May 2020, our Health & Safety Committee had worked together with the relevant departments to keep our campus safe for our students and staff who returned last year July. The upkeep of the new normal continues till today for the returning of our students this October 2021 onwards. We request for each of you to strictly follow the Standard Operating Procedures in order to keep each other safe.

ENTRY PERMISSION STATUS

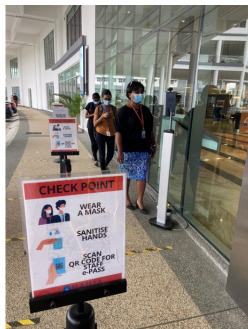
Please refer to your MySejahtera risk status before arriving to campus. Permission for entry into the campus grounds will be based on the following risks status



Permitted on Campus



NOT Permitted on Campus



UNITY, EMPATHY & HUMANITY BUILDING

My Sejahtera Check-in, Staff/Student QR Code Check-in & Temperature Screening to be completed.



ELEVATORS

All elevator cabins are fitted with UVC Light Steriliser and restricted to 4 to a cabin.

CAMPUS LIFE IN THE NEW NORMAL



DINING AT THE HABITAT

- Scan My Sejahtera to Check-in to The Habitat
- Only 2 persons per table
- Follow the physical distancing when standing in queue.

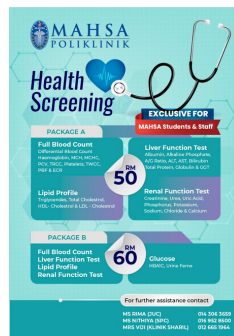


HAND SANITISERS

Available at the Ground Floor of each block, and at designated entrances.

DISINFECTION SERVICES

MAHSA disinfection services are available on-campus under the care of the faculty of Health Sciences and MAHSA Technologies.



MAHSA POLIKLINIK @ SPC

Our very own clinic is located at the North Gate Entrance of the campus providing medical and laboratory services.



PUBLIC MESSAGES FOR DAILY REMINDERS

Our digital TVs around campus carry the message of what needs to be practised strictly as a daily reminder to follow the S.O.Ps that have been put in place. Please read them and follow the rules to keep our campus safe together.

SAFETY MEASURES REQUIRED WHILE ON CAMPUS



The wearing of masks is mandatory while in the University. The mask should be discarded every eight hours or if it is soiled. You are recommended to wear a 4-ply mask or double surgical masks to keep yourself safe.



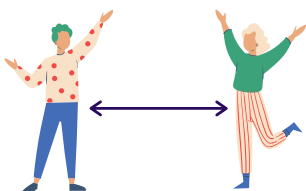
You are required to bring your own sanitisers containing at least 75% alcohol. You are reminded to sanitise your hands after using the washroom, before eating and touching common items like door knobs/handles/or any surfaces.



If you come in contact with anyone who has been exposed to the virus, you must inform your Programme Coordinator. You shall seek medical attention at any government or private health facility.



If you have travelled to any of the affected zones or have been in contact with any affected persons with symptoms within 14 days, you must report immediately to the Programme Coordinator and seek medical attention.



Maintain at least 1 meter distance between the people occupying the same room with you.



Wipe down surfaces in classrooms and laboratories with disinfectants before and after each use/session.



Refrain yourself from being in campus if you have the symptoms of COVID-19 and inform your programme coordinator.

FOLLOW THE SAFETY RULES

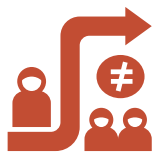


PRACTISE 3W AVOID 3C

AVOID THE 3C



Crowded Places



Confined Spaces



Close Contact

PRACTISE THE 3W



Wash



Wear



Warn



Know the **COVID-19 SYMPTOMS**

The following symptoms may appear 2-14 days after exposure:

- Fever
- Cough
- Shortness of Breath
- Sore Throat

Seek medical advice if:

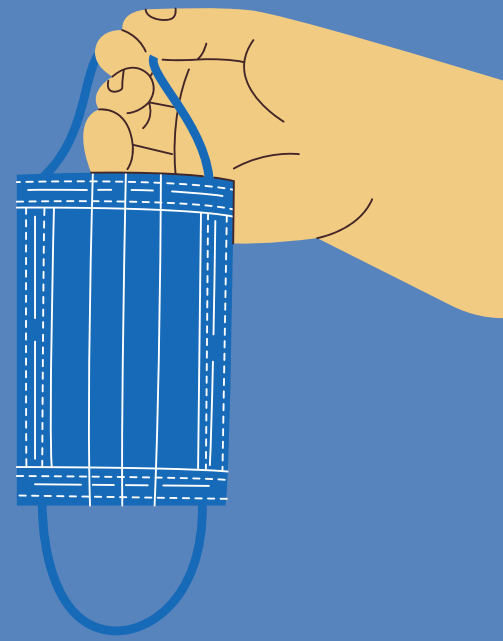
- You develop worsening symptoms
- You have been in close contact with a person known to have COVID-19
- You live in or have recently been in an area with ongoing spread of COVID-19



#StopTheSpread

How to use a mask?

Source: World Health Organization



Before Putting on a Mask:

Clean hands with **alcohol-based hand rub** or **soap and water**.



While Wearing a Mask:

1. **Cover your mouth and nose.** Make sure there are no gaps between your face and the mask.
2. **Avoid touching the mask.** If you do, clean your hands with alcohol-based hand rub or soap and water.
3. Replace the mask with a new one as soon as it is damp. **Do not re-use single-use masks.**



To dispose of the mask:

1. Remove the mask from behind using the strings. **Do not touch the front of mask.**
2. Discard the mask **immediately** in a closed bin.
3. **Clean hands** with **alcohol-based hand sanitiser** or **soap and water**.

MAHSA UNIVERSITY CAMPUS MAP



Jalan SP 2, Bandar Saujana Putra,
42610 Jenjarom Selangor
1800-88-0300
www.mahsa.edu.my

IMPORTANT CONTACT/WEBLINKS

- **RESIDENCE HOTLINE:** +6019-968 9203
- **SECURITY HOTLINE:** +6019-968 9460
- **STUDENT CENTRAL HOTLINE:** +6011-12277425
- **STUDENT CENTRAL E-TICKET SYSTEM:** <https://bit.ly/StudentCentralTicket>
- **DOCTORS ON-CALL:** 016-2644205 (Dr. Ali), 014 6956467 (Dr Shanti)
- **EMGS:** <https://educationmalaysia.gov.my>
- **MAHSA RESIDENCE BOOKING:** <https://app.acuityscheduling.com/schedule.php?owner=19869882>
- **MAHSA RESIDENCE OUTPASS APPLICATION LINK:** <http://110.4.40.157/residence/studentIndex.php>
- **ONLINE PAYMENT:** <https://mahsa.edu.my/epay/online-payment.php>
- **OUTSTANDING FEE PAYMENT:** <https://mahsa.edu.my/bursary/>

CAMPUS FACILITY OPERATIONAL HOURS

- **ADMINISTRATIVE HOURS:** 8AM - 6PM
- **MAHSA SPORTS AND RECREATIONAL CENTRE:** 8AM - 10PM
- **iMORE GAMING CENTRE:** 6PM - 11PM
- **LIBRARY:**
Monday - Friday: 8.00AM - 6.00PM
Saturday: 9.00AM - 5.00PM
Sunday & Public Holidays: Closed
- **THE HABITAT:** 8AM - 10PM
- **DAUN CAFE:** 8AM - 10PM
- **MERCEARIA GROCER:** 9AM - 9PM
- **MAHSA POLIKLINIK @ SPC:** 8AM - 5PM